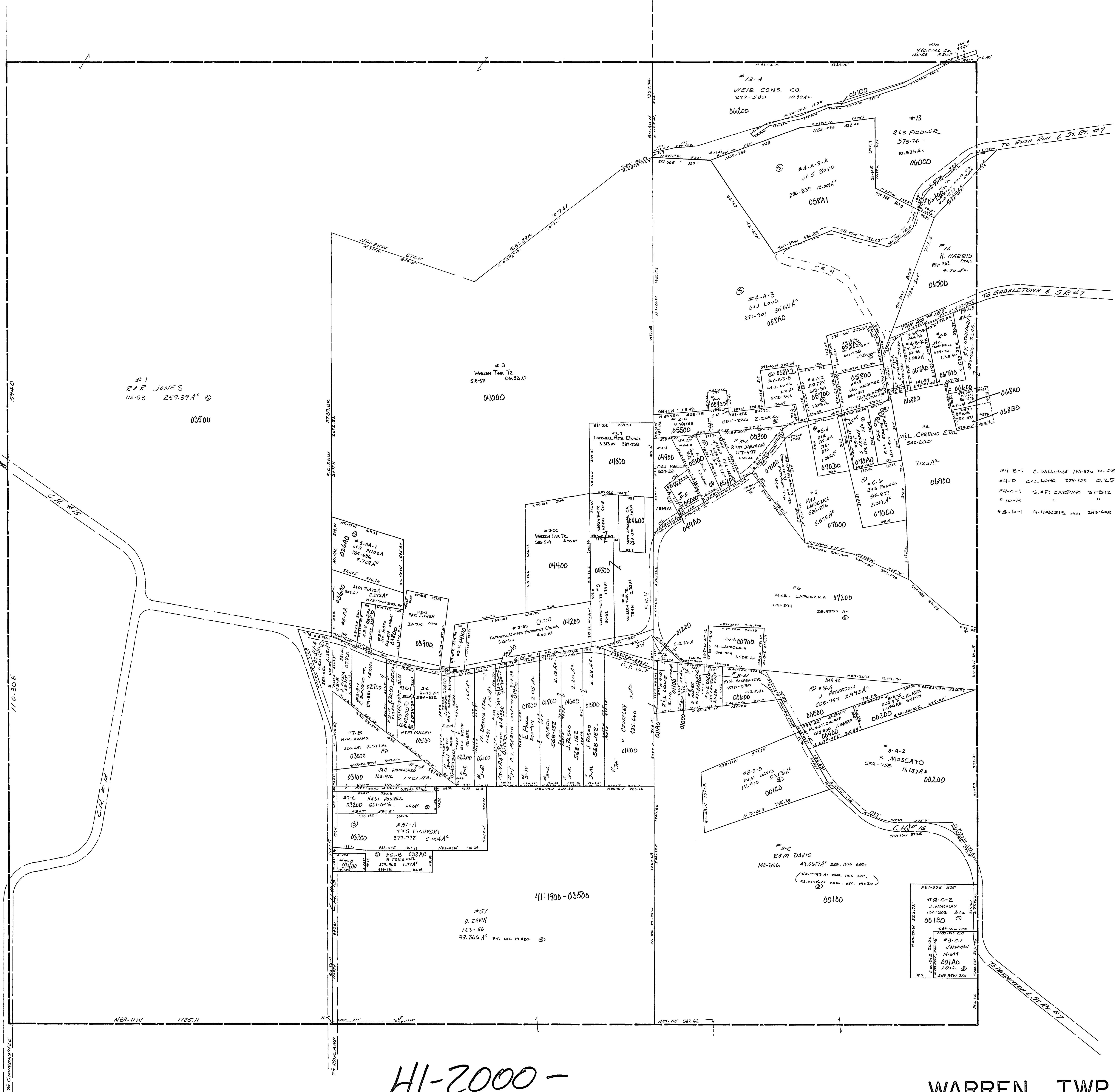


# 7-D	B. TRIGG	305-19	0.225 A ⁺
# 3-V	JIM PARRA	477-86	1.5 A ⁺
# 3-H	SEK DAVIS	160-250	0.77 A ⁺
# 12	D. HARRIS	023-904	0.25 A ⁺
# 3-A	"	"	0.14 A ⁺
# 1-E	I. BONECUTTER	200-284	1.21 A ⁺
# 1-B	E. WELLS	304-316	0.282 A ⁺
# 4-A-1	J.R. FRY	466-257	1.08 A ⁺
# 7-E	D. IRVIN	101-102	0.03 A ⁺
# 7-F	D. IRVIN	101-102	0.031 A ⁺
# 5-A	E. WELLS	304-316	0.282 A ⁺
# 3-N-1	N. DENNIS ETAL	1-281	0.0250 A ⁺
# 3-C-1	EYB CHAIN	641-628	0.8267 A ⁺
# 3-S	KIE ANTAL	551-858	0.977 A ⁺

1
R. R. JONES
110-53 259.37 A⁺ ⊕
03500

3
WARREN TWP TR.
SIB-211 60.88 A⁺
04000



4-B-1 C. WILLIAMS 190-530 0.084 A⁺ ⊕
4-D G.L. LONG 220-525 0.252 A⁺ ⊕
4-C-1 S.F. CARPINO 37-592 0.456 A⁺ ⊕
10-B " " 0.578 A⁺ ⊕
8-D-1 G. HARRIS 203-608 0.136 A⁺ ⊕

41-2000-

WARREN TWP.
SEC. 20, T. 5, R. 2.
SCALE: 1"=200'